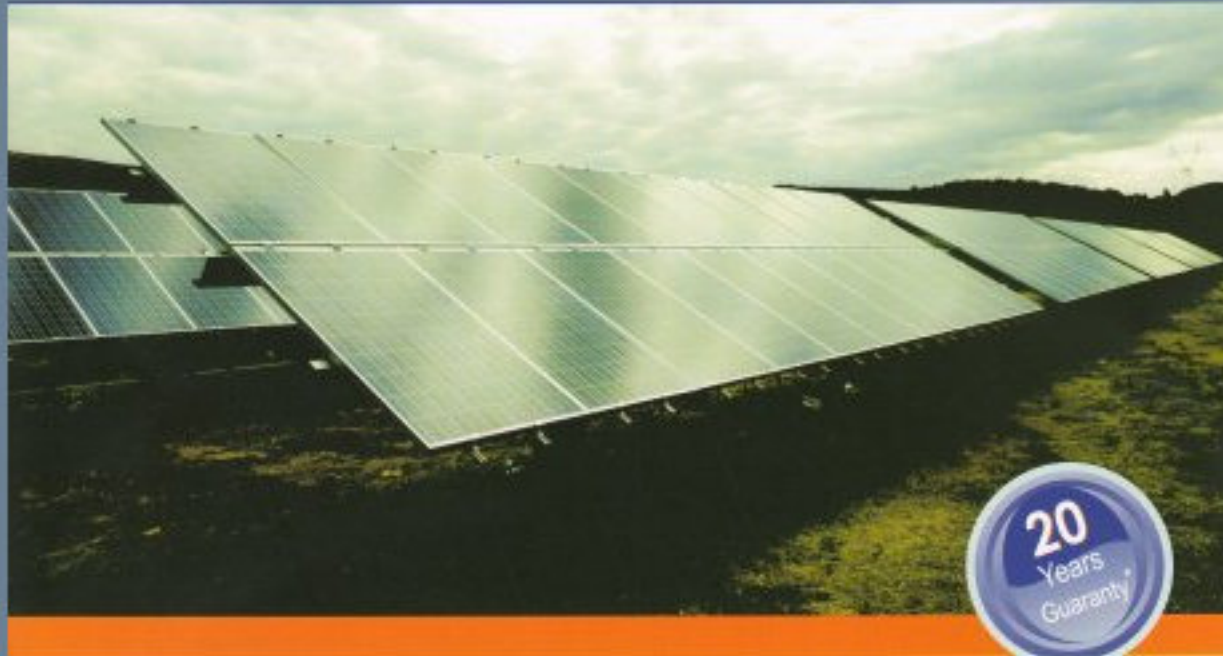


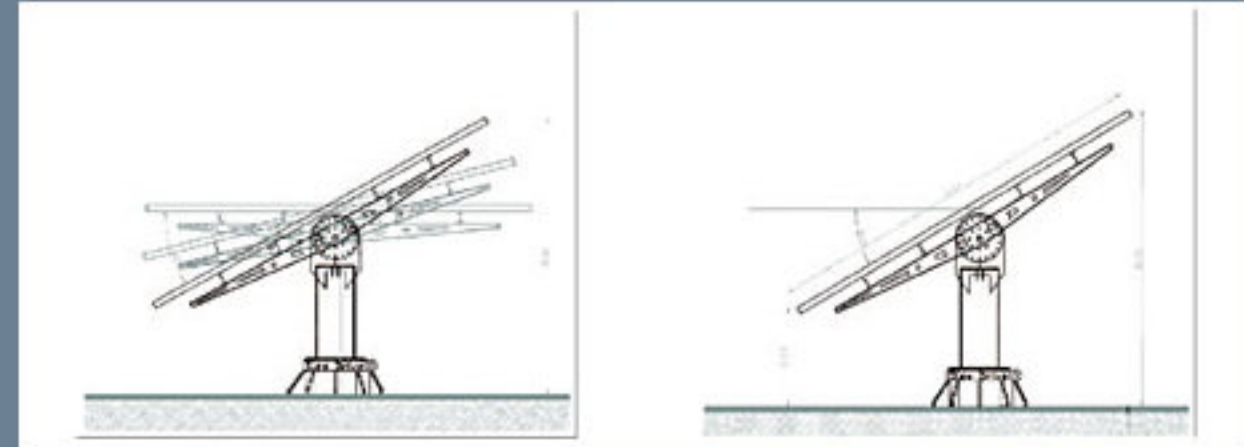
# DTS M-2.5 FIX



## DTS M-2.5 FIX – A standard value not deteriorated by time!!!

Permanent loads and weather changes have been calculated in **design**.

**DTS M 2,5 FIX bases** have been designed to resist extreme weather conditions, loading by snow, ice, temperature changes, etc, according to **European Code 1. Part 1.4 (prEN 1991 - 1 0 4.6)**



Aerodynamic Design and Easy Adjustment (DIVIDED STRUCTURE).	Perfect Static Behavior.	High Resistance (snow - ice - wind - etc)
Heavy Steel Construction by St37-2 DIN 17100.	All the system parts are made by hot dip galvanized Steel.	Easy Installation, perfect appliance and implementation to all ground and building features.
Flexible Construction.	Possibility of setting all the PV modules types.	Installation with/without concrete on bedrock, possibility of changing the system parts height and width. Simply by loosening the bolts on flanges and adding adapters, the removal of small stones is achieved to be prevented.

**The structure** is divided and made by hot dip galvanized Steel.

**The setting** of PV panels is easily and safely achieved on aluminum rails (railways), certified by German companies, within 12-m rafters.

**Their mounting** is easy, safe and quick.

No special knowledge for setting and appliance is required.



\* For additional details regarding to guaranty, please refer to the full text of Guaranty.

\* Follow the **MANUAL** and the instructions of the special text book .